

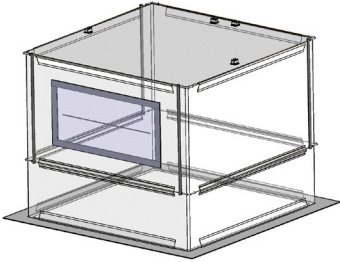
DIRT Bag™

Assembly & Use

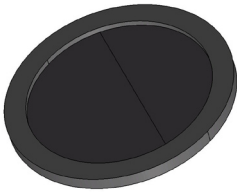
For more information:

937-458-0210 | www.dirtbagrepair.com

Contents



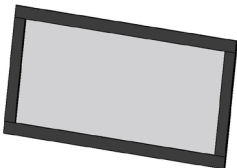
1 - DIRT Bag Isolation Unit



2 - Hand Ports



1 - Dual-Slotted Hose Port



1 - Particle Filter

Assembly

1. Deploy the DIRT Bag by rotating the vertical supports and attaching them to the middle ring of the bag.
2. Remove the paper backing from the hand port adhesive rings.
3. Push the hand ports onto the DIRT Bag such that the repair site is easily accessed.
4. Cut away the plastic film behind each hand port to allow passage into the bag.
5. Attach the hose port in a convenient location, following the same procedure as steps 2-4.

Use

1. Clean and dry work area.
2. Center the bottom ring of the DIRT Bag over the work site.
3. Remove the paper backing from the bottom adhesive ring of the DIRT Bag.
4. Press the adhesive tightly around the repair site.
5. Remove the perforated bottom of the DIRT Bag using the hand ports.
6. Perform the operation/repair.
 - Hoses and wires may be inserted through the hose ports and tools and materials can pass through the DIRT Bag by opening the attached material passageway.
 - The supplied particle filter can be used in operations requiring air exchange within the bag (vacuuming or using pneumatic tools) and can be exchanged for the material passageway on the DIRT Bag.
7. When finished, remove the DIRT Bag by peeling the adhesive ring away from the work site.

Manufactured by:
CRG Industries, LLC
2750 Indian Ripple Rd. Dayton, Ohio 45440